

The logo for KEYA, featuring the word "KEYA" in a stylized, white, sans-serif font. The letters are interconnected, with the 'K' and 'E' sharing a vertical stroke, and the 'Y' and 'A' sharing a vertical stroke. A registered trademark symbol (®) is located at the top right of the 'A'.

UNLOCK INNOVATION

The background is a solid blue gradient. On the right side, there are several thin, white, curved lines that sweep across the page from the top right towards the bottom left, creating a sense of motion and depth. These lines are more densely packed in some areas, creating a mesh-like effect.

User Handbook
KEYA CONTROL APP
TRONIC MIFARE

CONTENTS

1. How to install and run the Keya Control App	3
2. How to log in	4
3. How to connect the TRONIC MIFARE lock to the smartphone	5
4. INTERFACE: Keya Control App – TRONIC MIFARE	6
5. HOME: Keya Control App - TRONIC MIFARE	7
6. CONFIGURATION: Keya Control App – TRONIC MIFARE	8
7. AUTO-OPENING: Keya Control App – TRONIC MIFARE	9
8. REGISTER: Keya Control App – TRONIC MIFARE	10
9. Assigned Cards Keya Control App - TRONIC MIFARE	11
10. Card types	12
11. Management, Master and User Cards	13
12. Parameter Card Configuration	14

1. How to install and run the Keya Control App

- I. Download the application.
- II. The shortcut will be automatically created in the Menu.
- III. Run the application.
- IV. Language detection automatically.

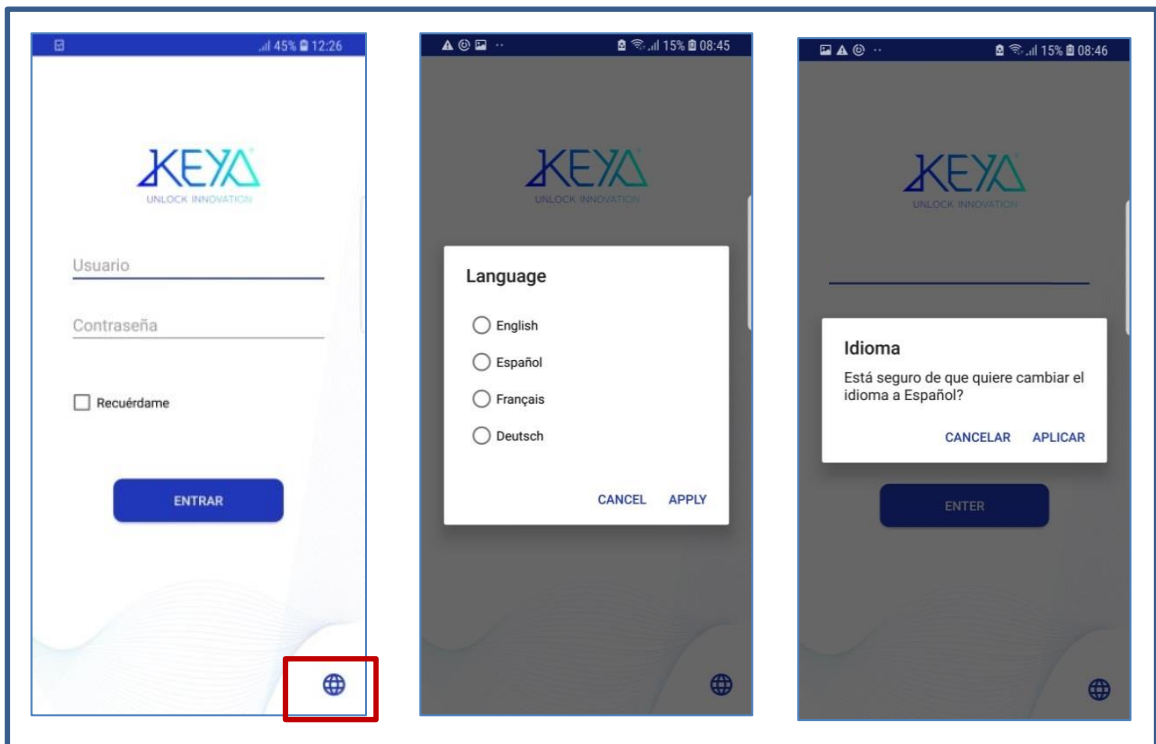


Figure 1: Switch the language

2. How to log in

- I. Run the App and sign in with your purchased Username and Password.
- II. Create a new password. (It must be longer than 4 digits and different from the previous one).
- III. When logging in for the first time, enter the purchased License Code.

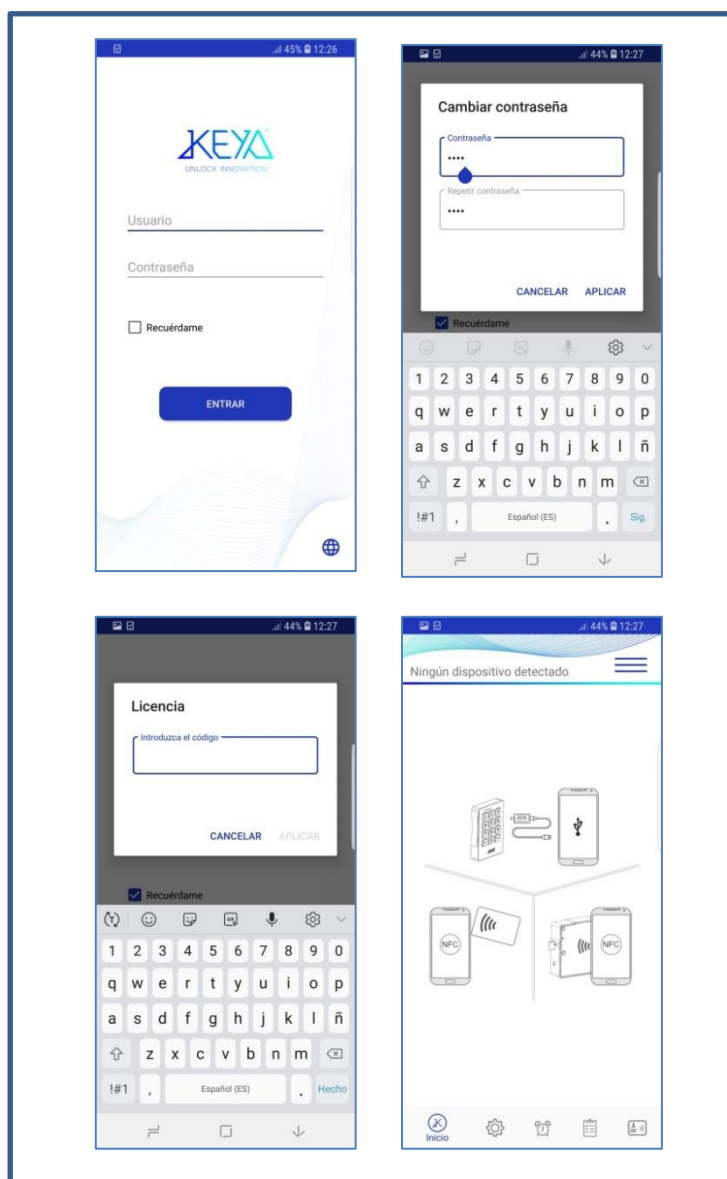


Figure 2: Home page

3. How to connect TRONIC MIFARE to the smartphone

- I. With the App running, connect the TRONIC MIFARE to the Mobile phone using the Communications Key and Mobile USB Cable set.



Figure 3: Connection of the cables to the lock

- II. Accept permission to use the mobile device's USB adapter. (See Figure 4)

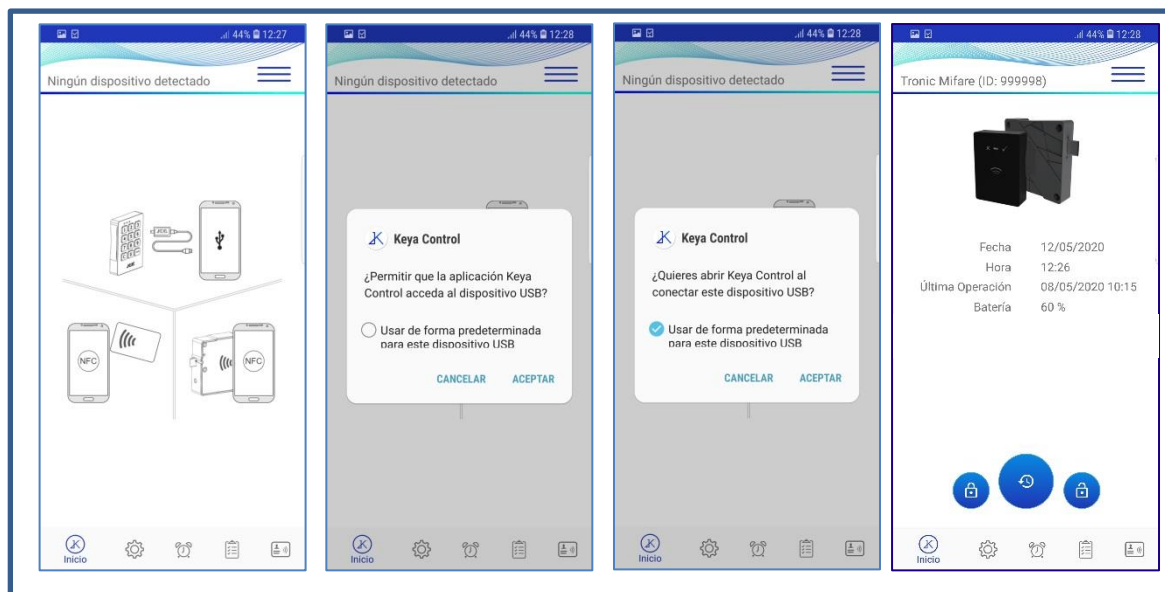


Figure 4: USB communication permissions



4. INTERFACE: Keya Control App

In any situation, you can navigate to the user interface by pressing the Options button in the upper right corner or, if your mobile phone allows it, by sliding your finger from right to left on the screen. (See figure 5):

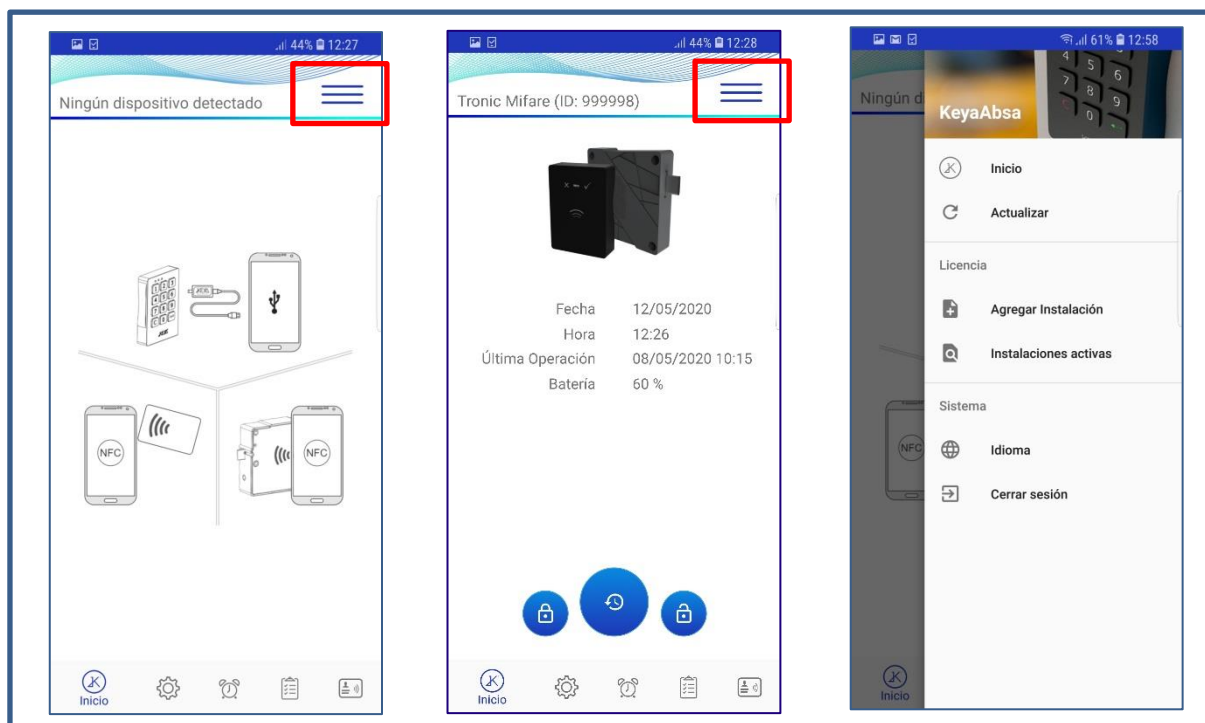


Figure 5: Keya Control App Interface

Inicio	<p>Pressing the <i>Home</i> button allows you to go to the home section of the App.</p>
Actualizar	<p>The <i>Update</i> button reloads the last action that was being displayed on the screen, parameter reading, card reading, etc.</p>
Agregar Instalación	<p>Opens the Licenses field so you can add new IDOFs and Client IDs.</p>
Instalaciones activas	<p>Allows you to display the active installations within the account.</p>
Idioma	<p>Allows to switch the language.</p>
Cerrar sesión	<p>Allows the log out of the App.</p>

Table 1: Keya Control App Options

5. HOME: Keya Control App – TRONIC MIFARE



Figure 6: TRONIC MIFARE Home

Date	Internal date of the lock.
Time	Internal time of the lock.
Last action	Date of the last action performed
Battery	Battery status (%).

Table 2: Reading of the lock data.

	Close button. Allows the lock to be closed.
	Allows to set the lock to Time.
	Open button. Allows to open the lock.

Table 3: Home buttons.

6. CONFIGURATION: Keya Control App – TRONIC MIFARE

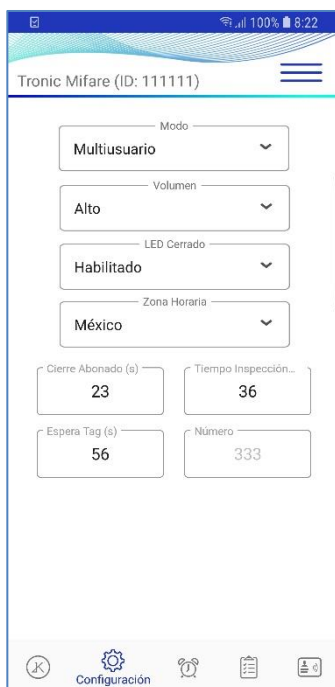


Figure 7: TRONIC MIFARE Configuration

Mode	Abonado/Multiusuario.
Serial number	Número de Identificación de Cliente. Modificable si se tienen los permisos.
Volum	Silencio/Bajo/Alto.
LED Closing	Deshabilitado/Habilitado.
Time Zone	Sin zona/ CE/ EEUU/ México/ Australia/ Nueva Zelanda.
Closing Subscriber	In subscriber mode, the lock closes automatically after the specified number of seconds.
Inspection time	Time that the lock remains open while the inspection manoeuvre is carried out when the master card is passed.
Waiting Tag	Waiting time for programming the reception of a new card.

Table 4: TRONIC MIFARE parameters.



7. AUTO-OPENING: Keya Control App – TRONIC MIFARE

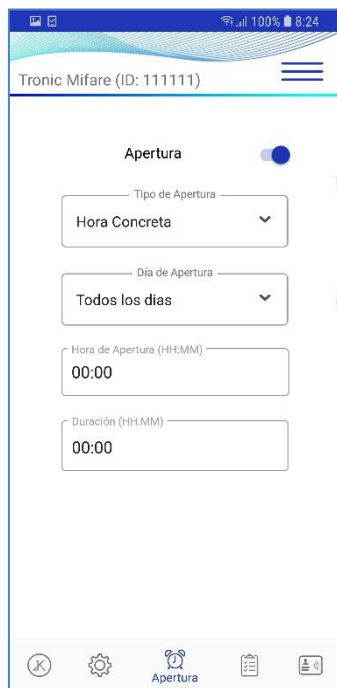


Figure 8: TRONIC MIFARE automatic squeeze

Process to activate automatic opening:

- I. Enable the Auto Open option.
- II. If the lock allows it, select the Opening Type.
- III. Select which day/s you wish the opening to take place.
- IV. Specify what time you want the opening to take place in Opening Time (HH : MM) and the Duration (HH:MM) for the duration of the automatic opening.

Finally, it is advisable to check the current time of the lock, to avoid possible inconveniences, after each modification of Automatic Opening it is recommended to update the Time of the lock with the "Set Time" button located in the Home section.

Auto-Opening	Automatic opening: Disabled /Enabled
Opening Type	Concrete Time. Modifiable if you have the permissions.
Opening Day	Monday/Tuesday/Wednesday/Thursday/Friday/Saturday/Sunday/ Every day/Working days only
Opening Time (HH:MM)	Time specifies that you want the Opening to take place.
Duration (HH:MM)	Duration of automatic opening. If "0 hours" and "0 minutes" are specified, the lock will remain open.

Table 4: Automatic opening parameters.

8. REGISTER: Keya Control App – TRONIC MIFARE

When selecting the *Records*, the operations performed on the lock will be displayed.



Figure 9: Opening and closing record of the TRONIC MIFARE lock

Time	Time of the action taken.
Date	Date of the action taken.
Action	Open/Close
Card Type	Management/Teacher/User/ Opening by PC/App.
UID	Identification number.
Mode	Multiuser /Suscriber

Table 5: Opening and closing record data.

9. Assigned Cards Keya Control App – TRONIC MIFARE



Figure 10: Cards assigned to TRONIC MIFARE

UID Management	Management card identification number.
UID Master	Master card identification number.
UID User	Card identification number for Users.

*ID: User ID belonging to the Mifare Card

Table 6: TRONIC MIFARE Assigned Card Data

10. Card Types



Figure 11: Management, Master, User and Parameter cards.

Tarjeta	Color	Descripción
Management	Black	Management Card, there is only 1 and it allows to assign and unassign Master Cards.
Management2	Black	They allow the replacement of Management cards.
Master	Cian Blue	Master Cards, can exist from 1 to 5 and allow to assign and unassign User cards.
Suscribed User	Blue	User cards, can exist from 1 to 50. They allow to open and to close.
Multiuser User	Blue	User Cards, go from Empty to Multi-User type. They allow you to open/close.
Parameters	White	Parameter Card allows you to modify the parameters of the locks.

Table 7: Card data.



11. Management, Master and User Card

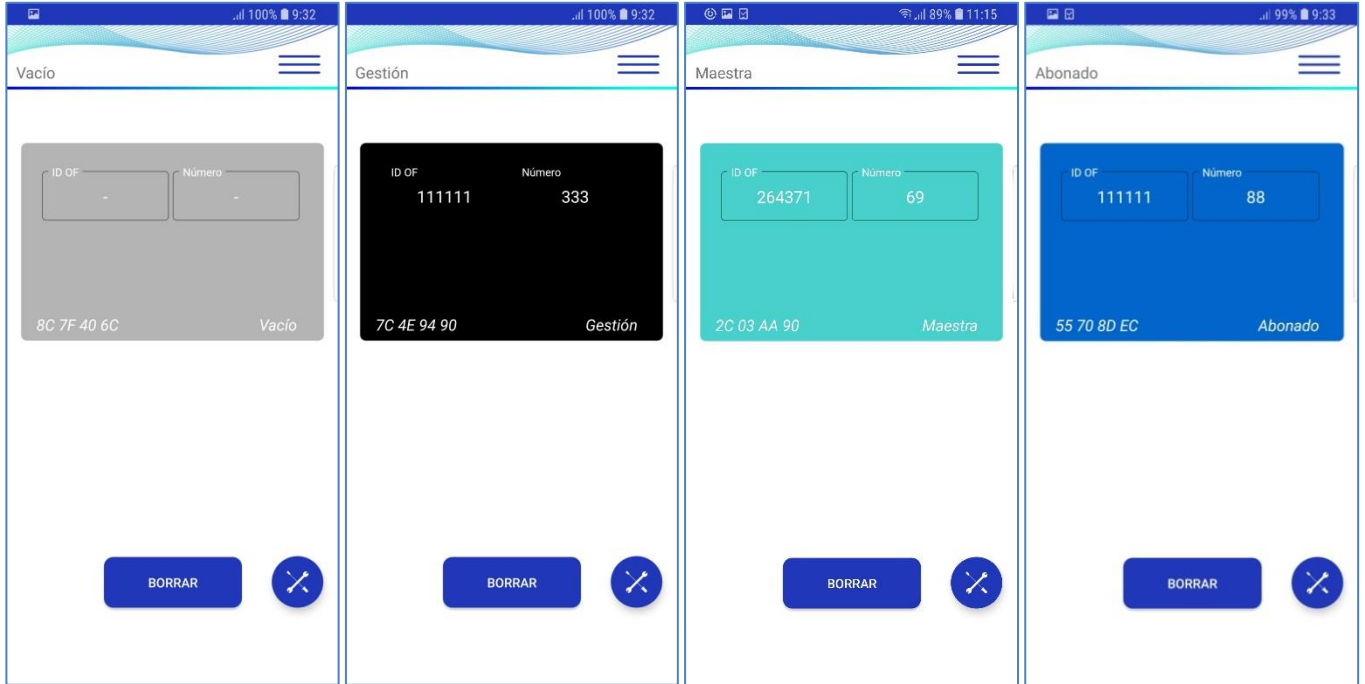


Figure 12: Cards read with a mobile phone with NFC.

UID	Card Identification Number. Cannot be changed.
IDOF	Identification number of the production order.
Serial number	Assigned locker number.
Type	Type of card. Multi-user/Suscriber

Table 8: Card data.

Borrar	Permite borrar la configuración de la tarjeta.
--------	------------------------------------------------

Tabla 9: Operaciones de los Usuarios.

12. Parameter Card Configuration

To modify a parameter card, bring the card closer to the NFC sensor zone, with the NFC sensor activated.

Keep the card in the NFC sensor zone during the parameter change.

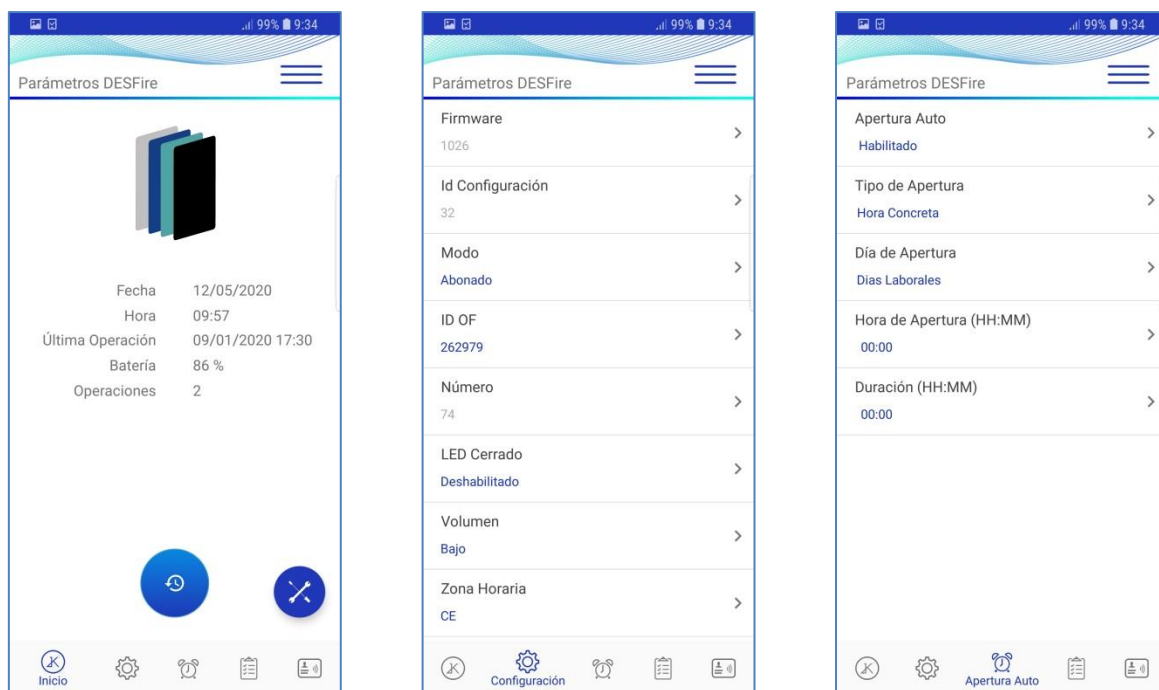


Figure 10: Cards assigned to TRONIC MIFARE

